



RANGER PROGRAM

Johan Hardjopawiro

Monitoring & Evaluation Coordinator

j.hardjopawiro@act-suriname.org

Ofc: (+597) 434-933



www.amazonteam.org



@AmazonTeamOrg



@AmazonConservationTeam



Partner with Indigenous people and other communities to protect the forest and strenghtnen their traditional culture



OUR VISION



We see a future where healthy tropical forests and thriving local communities exist in harmonious relationship with each other, contributing to the well-being of the planet.


OUR GOALS

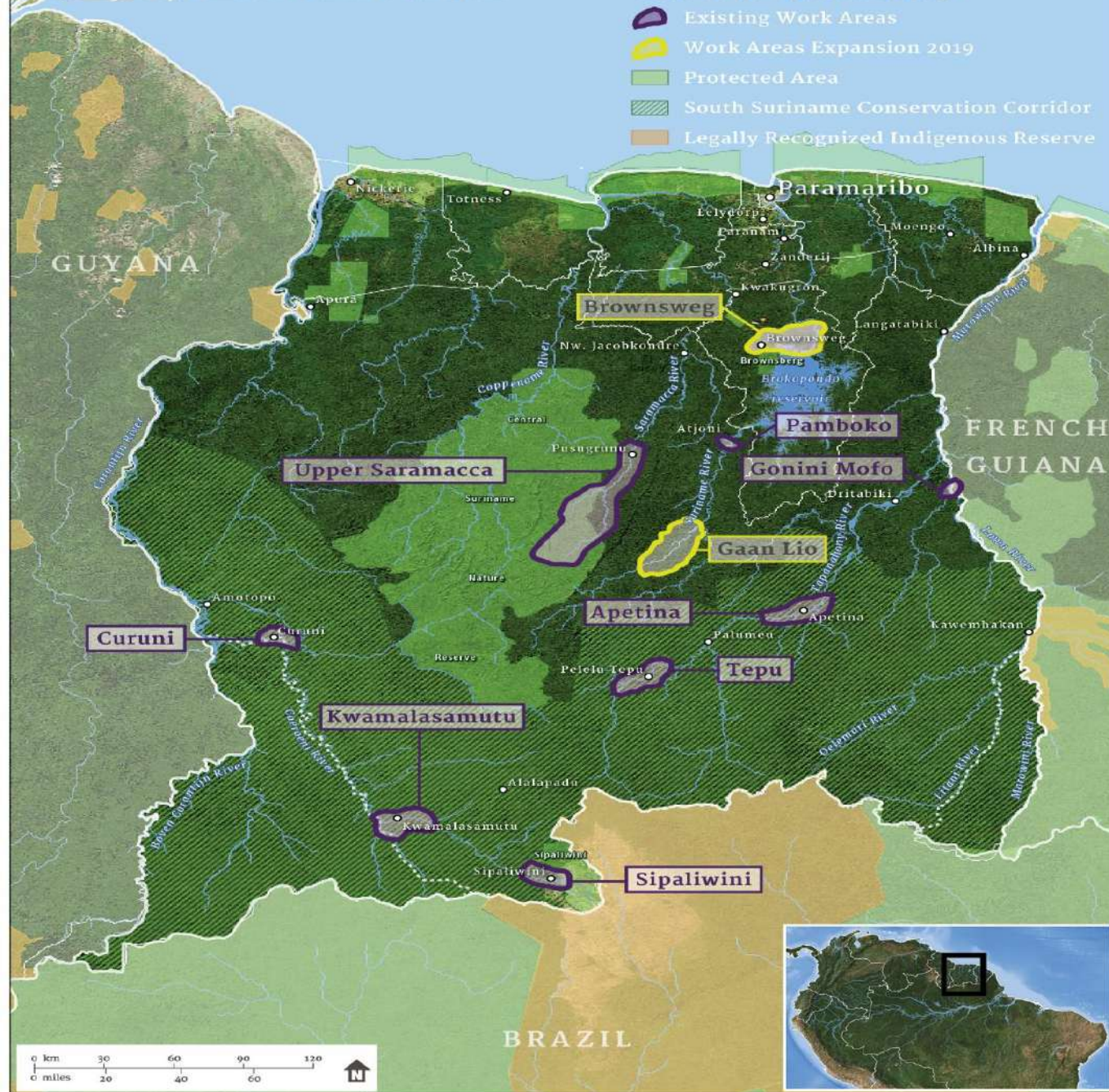


For this **vision** to become reality in each of the places where we work, two conditions must be met:

- 1. The forest ecosystem is healthy and robust.*
- 2. The communities achieve and maintain their desired state of well-being.*

ACT-SURINAME: SCOPE OF WORK 2019

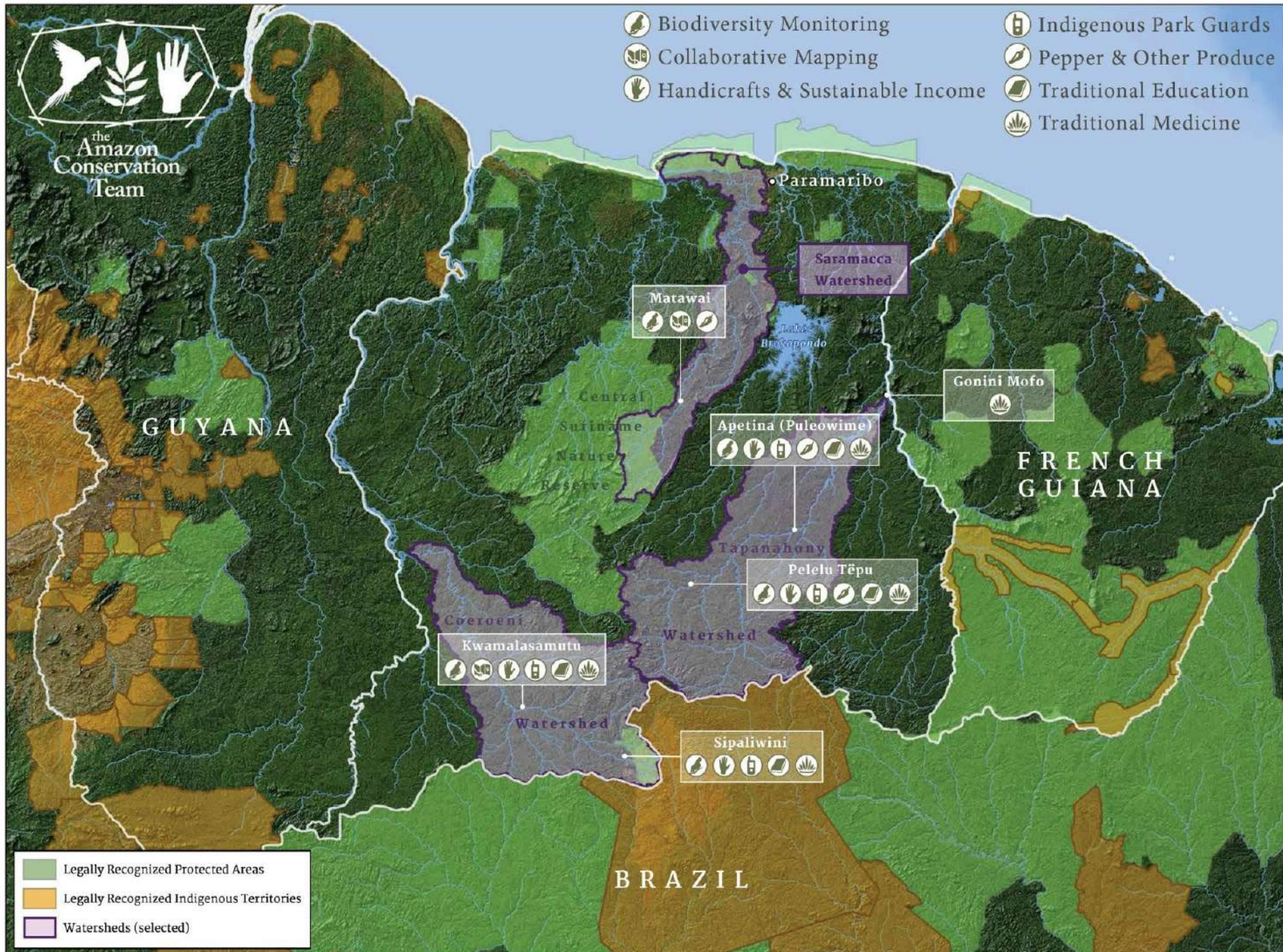
-  Existing Work Areas
-  Work Areas Expansion 2019
-  Protected Area
-  South Suriname Conservation Corridor
-  Legally Recognized Indigenous Reserve



Project Site 2020:

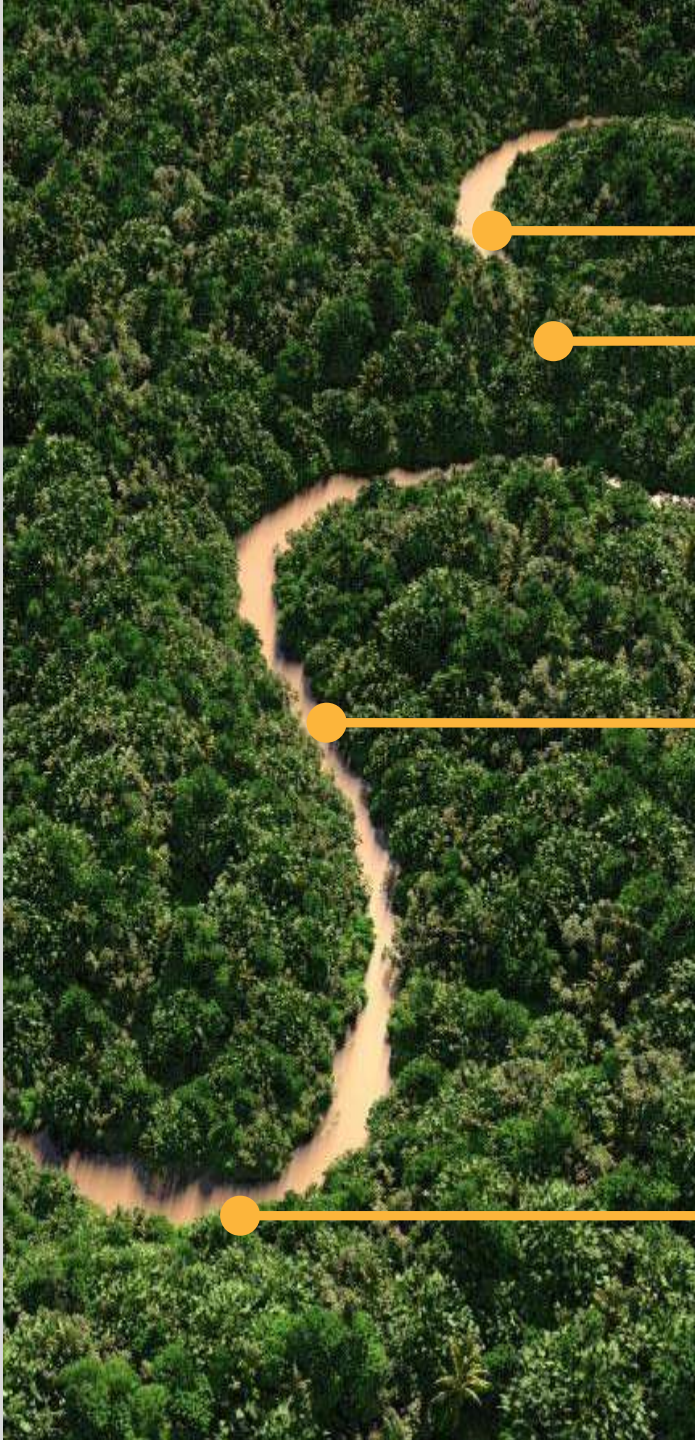
1. Kwamalasamutu
2. Tepu
3. Alalapadu
4. Apetina
5. Sipaliwini
6. Curuni
7. Matawai (10 Upper Saramacca River villages)
7. Gonini Mofo
8. Boven Suriname:
 - Pamboko
 - Langu

ACT Suriname Work Areas



4

THEMES/ SCOPE OF WORK



Community governance

Cultural Knowledge Systems

Sustainable Alternative Livelihoods

Sustainable Environmental Management



4 Themes/Scope of work with initiatives



Community governance

- Strengthen Internal governance
- Lifeplans
- Benefitsharing & Distribution
-



Cultural Knowledge Systems

- Support Shamans & Apprentices program
- Establish & manage traditional clinics
- Community exchange
- Oral Histories
- Bandja Dance Festival
-



Sustainable Environmental Management

- Ranger program
- Territorial mapping
- Community based monitoring
-



Sustainable Alternative Livelihoods

- Arts & crafts production & sale
- Stingless bee honey production & sale
- Pepper production & sale
- Sustainable energy
- Clean water
- Waste management & sanitation
-

SUSTAINABLE ENVIRONMENTAL MANAGEMENT



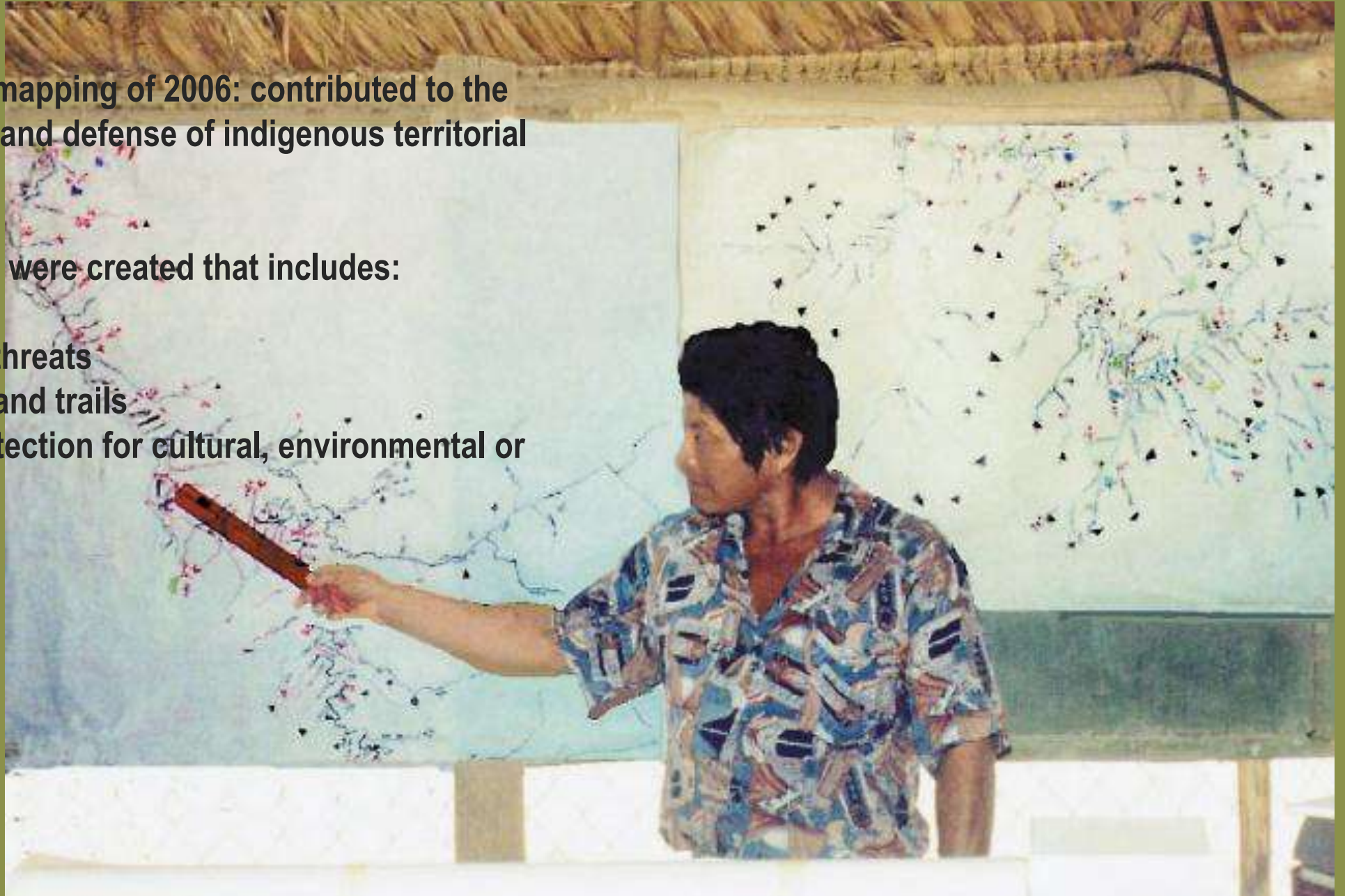
RANGER PROGRAM

Mapping

The first participatory mapping of 2006: contributed to the cultural strengthening and defense of indigenous territorial and political rights.

Several thematic maps were created that includes:

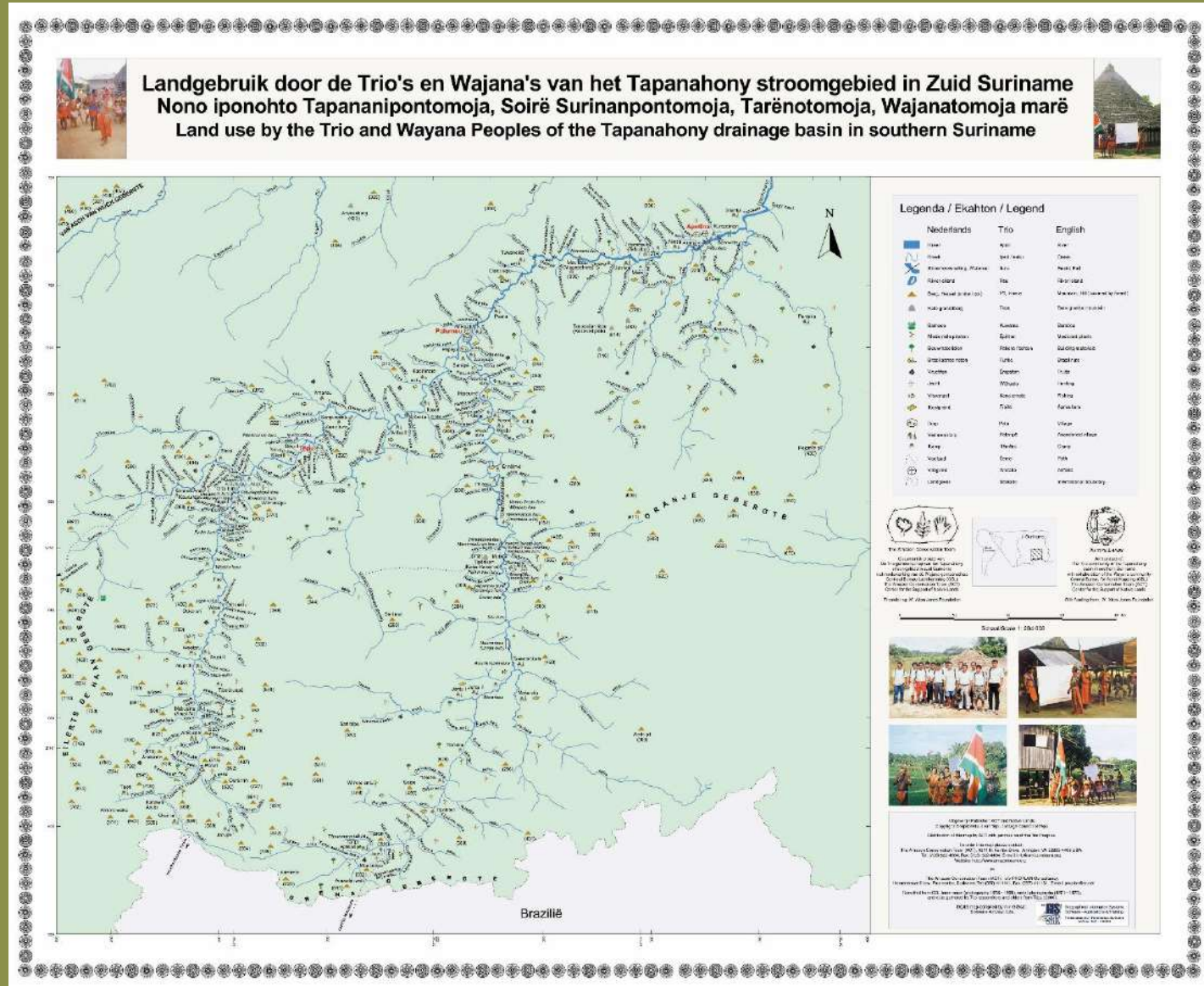
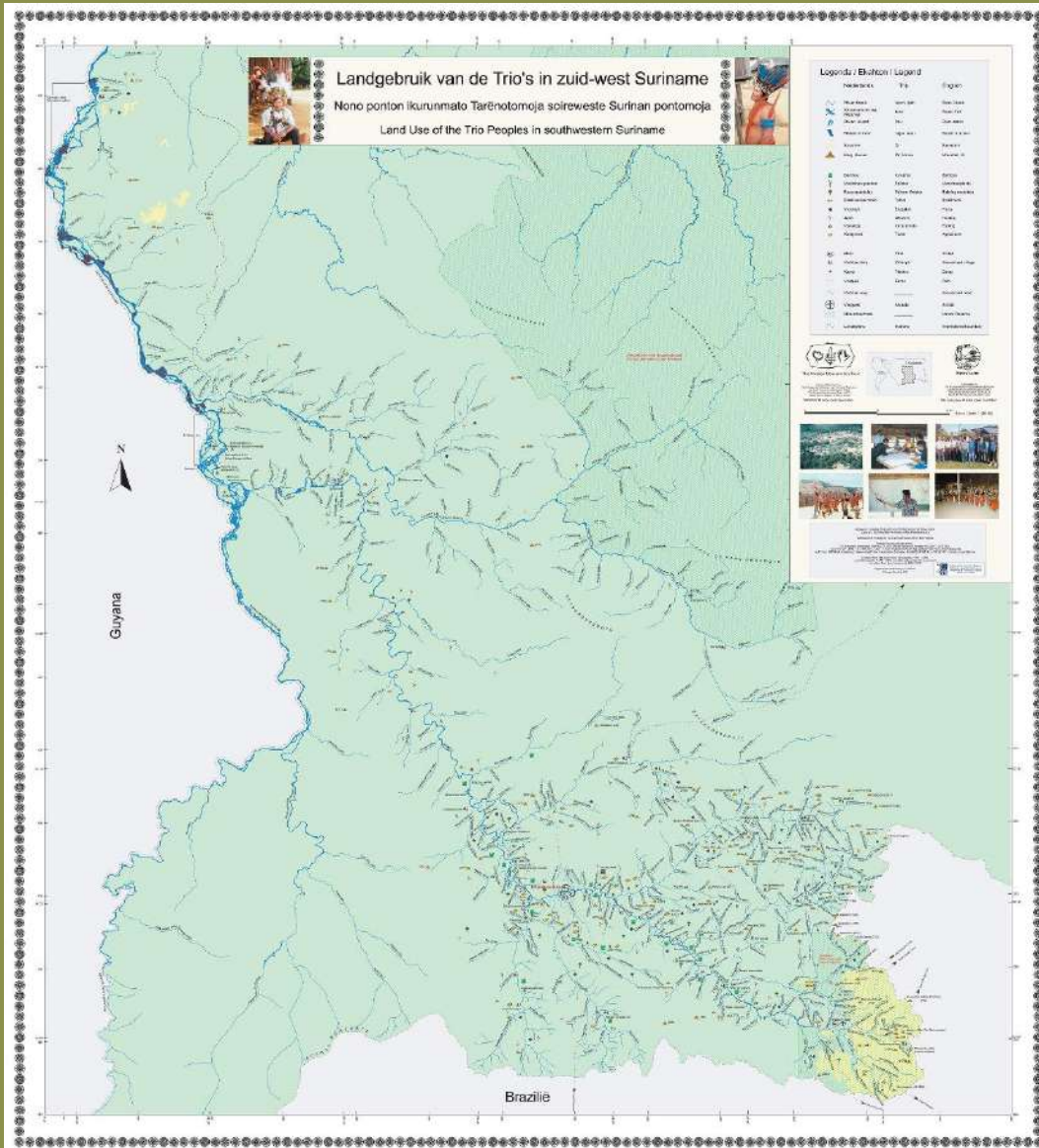
- Land utilization
- Potential risks and threats
- Future settlements and trails
- Areas requiring protection for cultural, environmental or economic reasons



- Mapping



- Mapping



• Mapping

Community Map for the Trio Indigenous Village of Kwamalasamutu in South Suriname



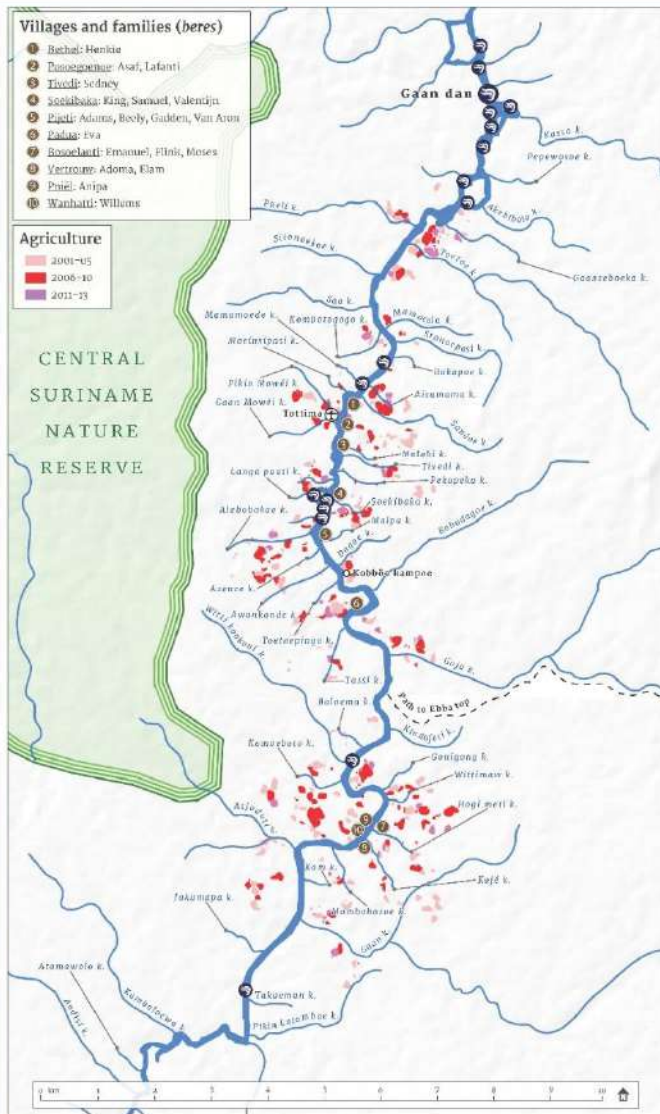
Community Map for the Matawai Maroons on the Upper Saramacca River in Suriname



The Amazon Conservation Team (ACT) has been working in Suriname since 1990. Our work focuses on the protection of the Amazon rainforest and the livelihoods of the indigenous peoples who live there. We work with local communities to develop sustainable livelihoods and protect their traditional knowledge and culture.



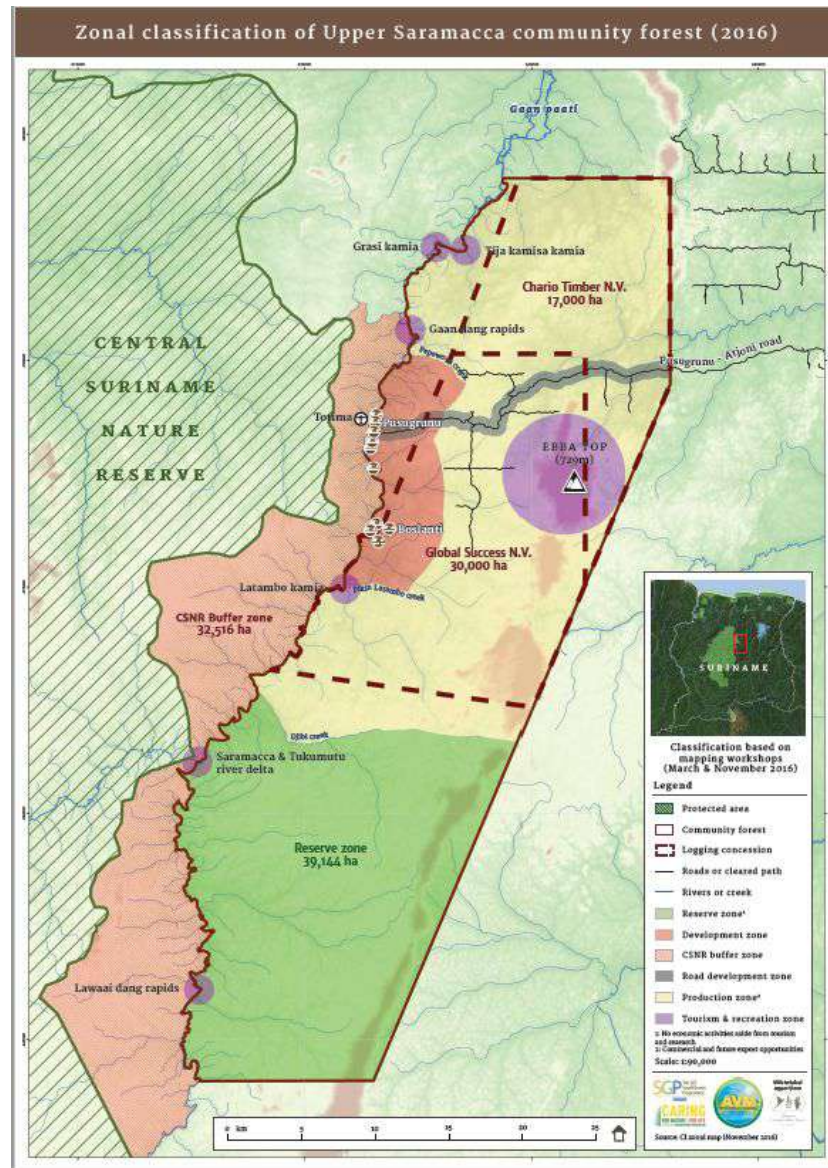
Entire Matawai territory



Villages Upper Saramacca river

- Bethel
- Posoegroenoe
- Tevreden
- Soekibaka
- Pijeti
- Padua
- Boslanti
- Vertrouwen
- Pniel
- Wanhatti

WORK AREA AMAZON CONSERVATION RANGER (ACR)- MATAWAI

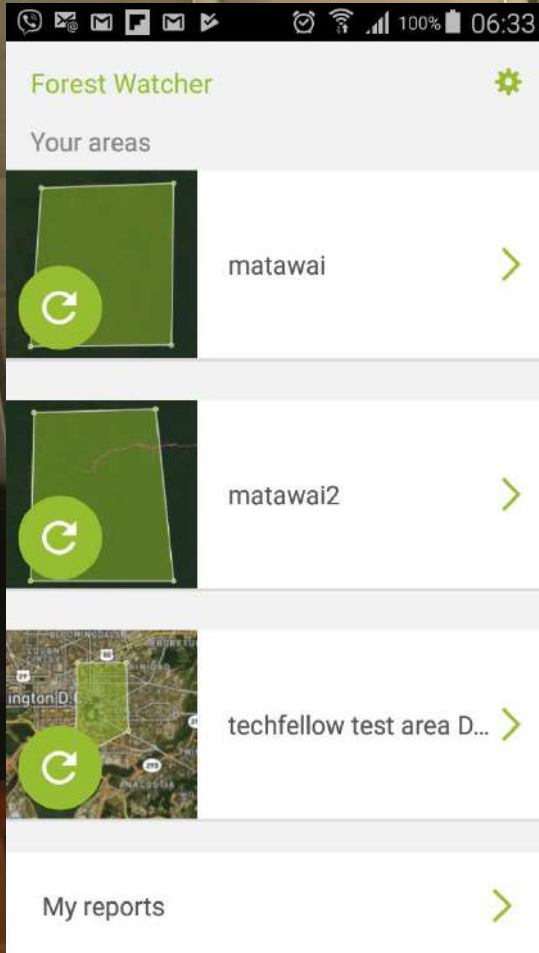


Program:

- Wild life monitoring (food security)
- **Sustainable Forest Management (SFM)**
 - ✓ Code of practice
 - ✓ Geared to NFSM
- Support the community in collecting data for the purpose of livelihood projects

TRAINING: FORESTRY EQUIPMENT





- Data processing & Analyze
 - ✓ Global Forest Watch (GFW) / Ground truth GLAD alert
 - ✓ Forest watcher App

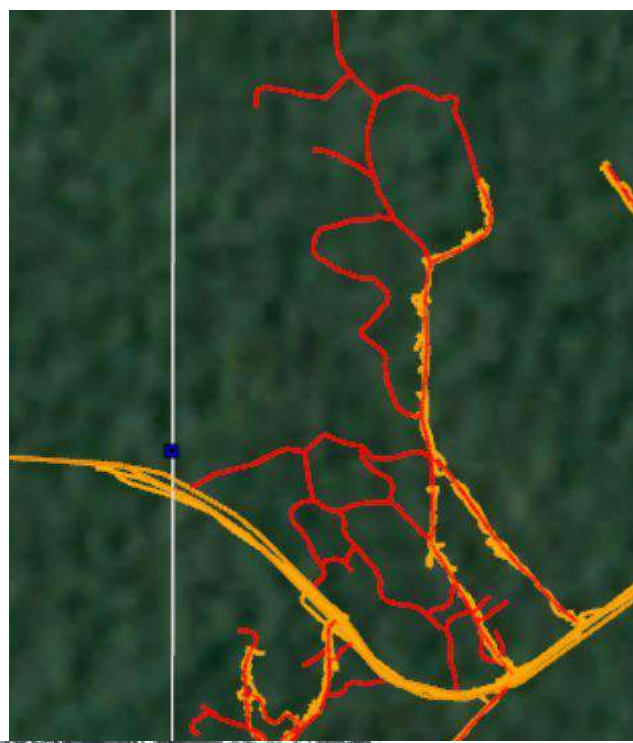
FIELD WORK ACR

- Analyze satellite images
- Analyze with GFW platform
- Ground truth



PROCESSING COLLECTED DATA

- Skidtrails: recorded **2.1 km/ha**
- Loss of tree cover :15.7 ha out of a survey intensity of 16.9 ha
- Harvest intensity: 55 cub/ ha
- Waste: 20% left in the forest



- Ranger program



- Ranger program





- Ranger program



Opening ACR Station



2005



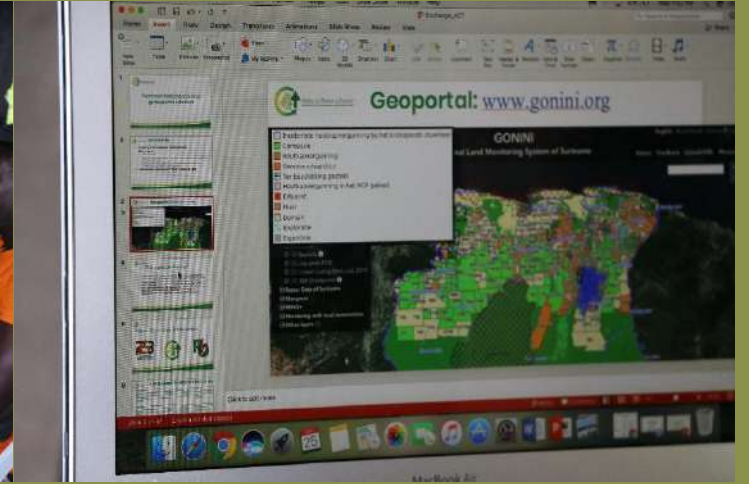
2015

• Community Exchange



- Community Exchange





CMRV EXCHANGE OF KNOWLEDGE





Our mission is to partners with indigenous people and other local communities to protect the tropical forest and strengthen traditional culture.



www.amazonteam.org/
www.act-suriname.org



@AmazonTeamOrg



@AmazonConservationTeam/
Amazon Conservation Team Suriname