

# Amerindian Peoples Association (APA), Guyana

---

22/20/2020



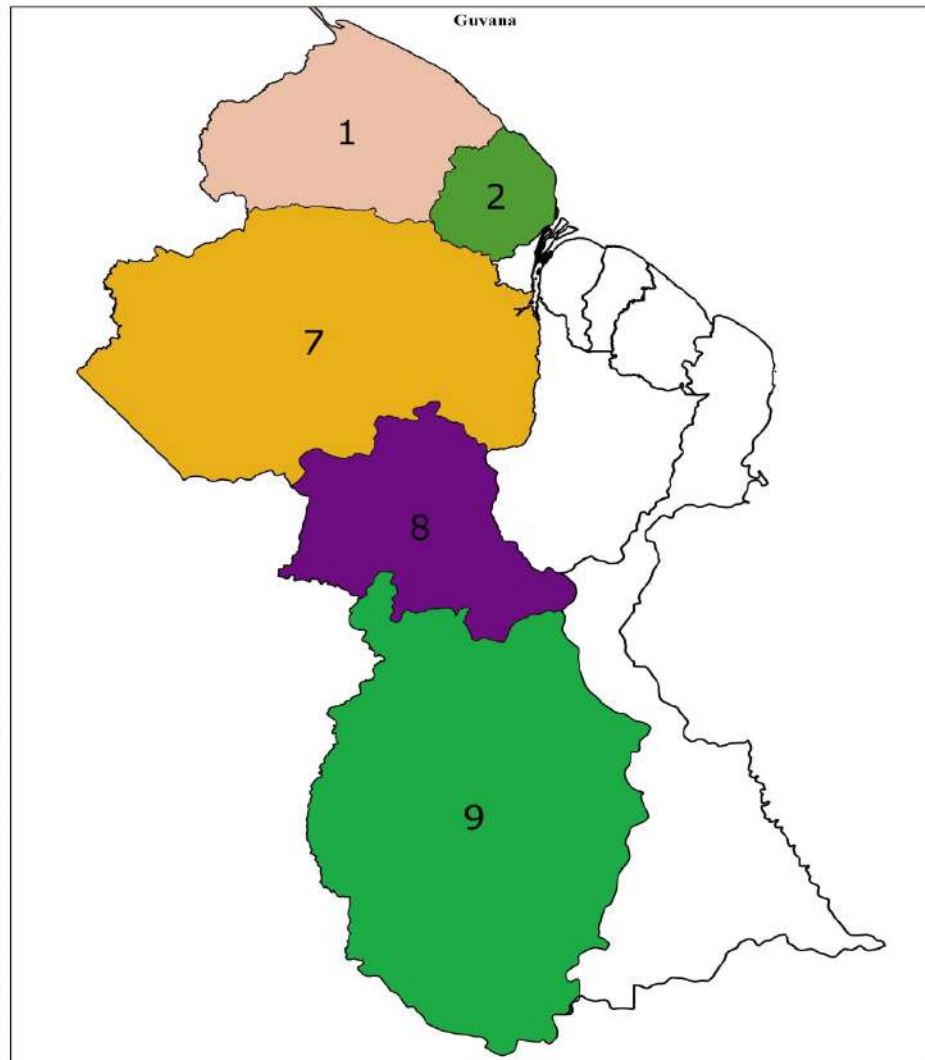


# Brief Background of APA

---

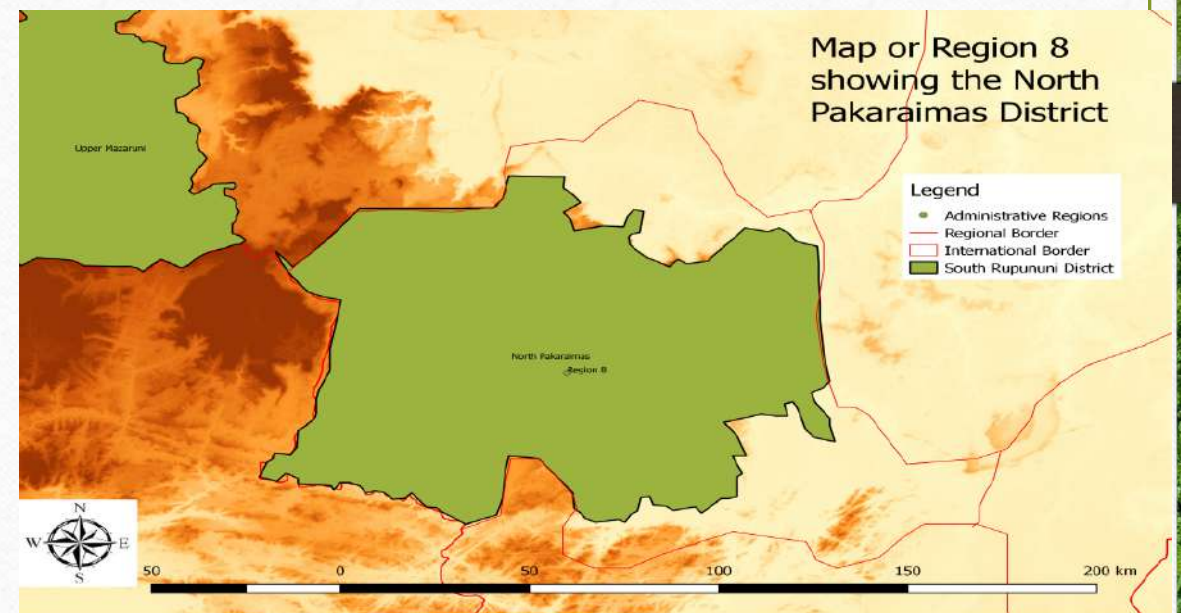
- The APA is a non-governmental Indigenous Peoples organization formed in April 1991 in the face of human rights violations against indigenous peoples;
- Is an advocacy organization that seeks to promote and defend the rights of the Indigenous Peoples of Guyana;
- Has members through community units in over sixty communities across Guyana;
- Is led by an Executive Committee comprising persons from various administrative regions in Guyana
- Has a central office in Georgetown, the capital.





## Where does the APA work?

Map of Guyana showing APA areas of work





# Land Tenure Assessments

---

Regions 1&2

Region 7

Region 8

In progress

Region 9





An aerial photograph of a river flowing through a forested area. The river is light green, and the surrounding land is covered in dense green trees and vegetation. The image is used as a background for the slide.

# What do we monitor

---

- Environmental degradation (Mining, Logging and other extractive activities)
- Water pollution
- Socio Economic impacts



## Gold Mining Sites

Land

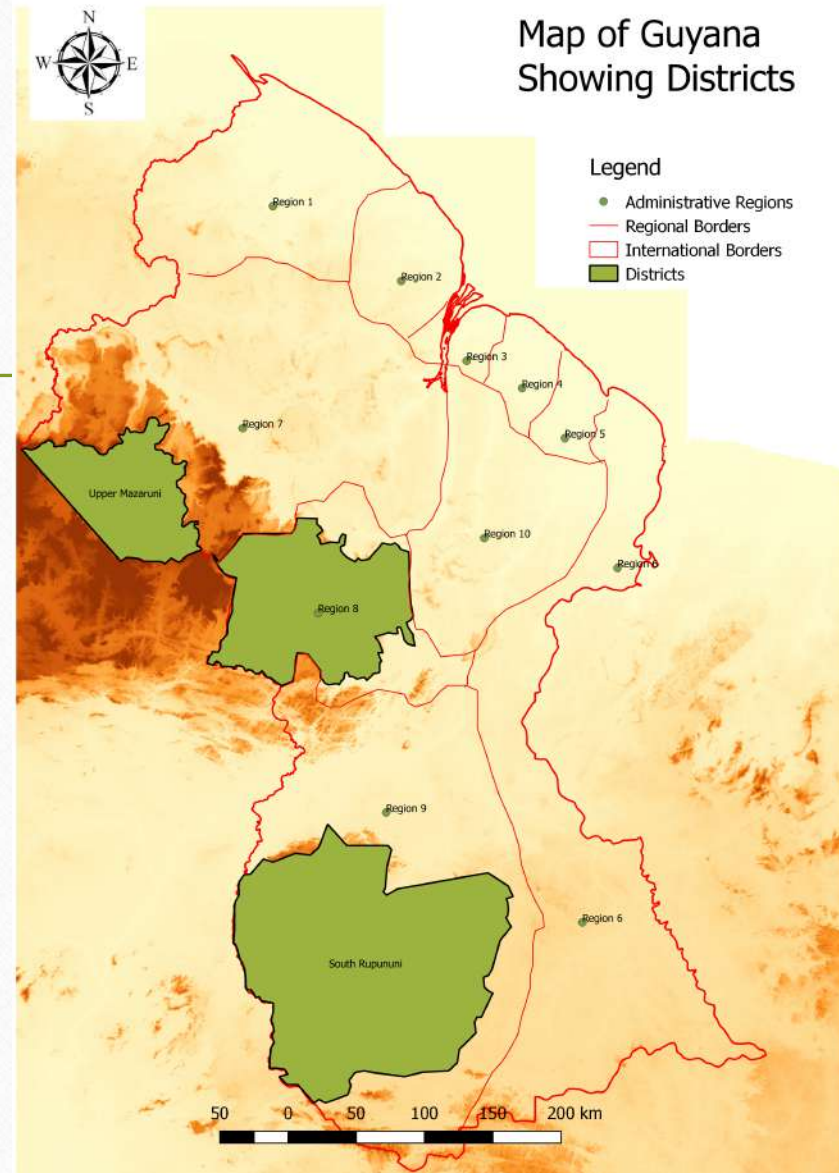


Water





Where do we  
monitor?





An aerial photograph of a river with greenish water, surrounded by dense green forest and some dry vegetation. The image is used as a background for the slide.

# How it works

---

- Communities identify potential monitors
- Training for community monitors
- Monitors collect data
- Data is cleaned processed and analysed by data technicians and stored at data hubs
- Reports go to the village leaders
- Reports go to the District Council
- Data and reports go to APA



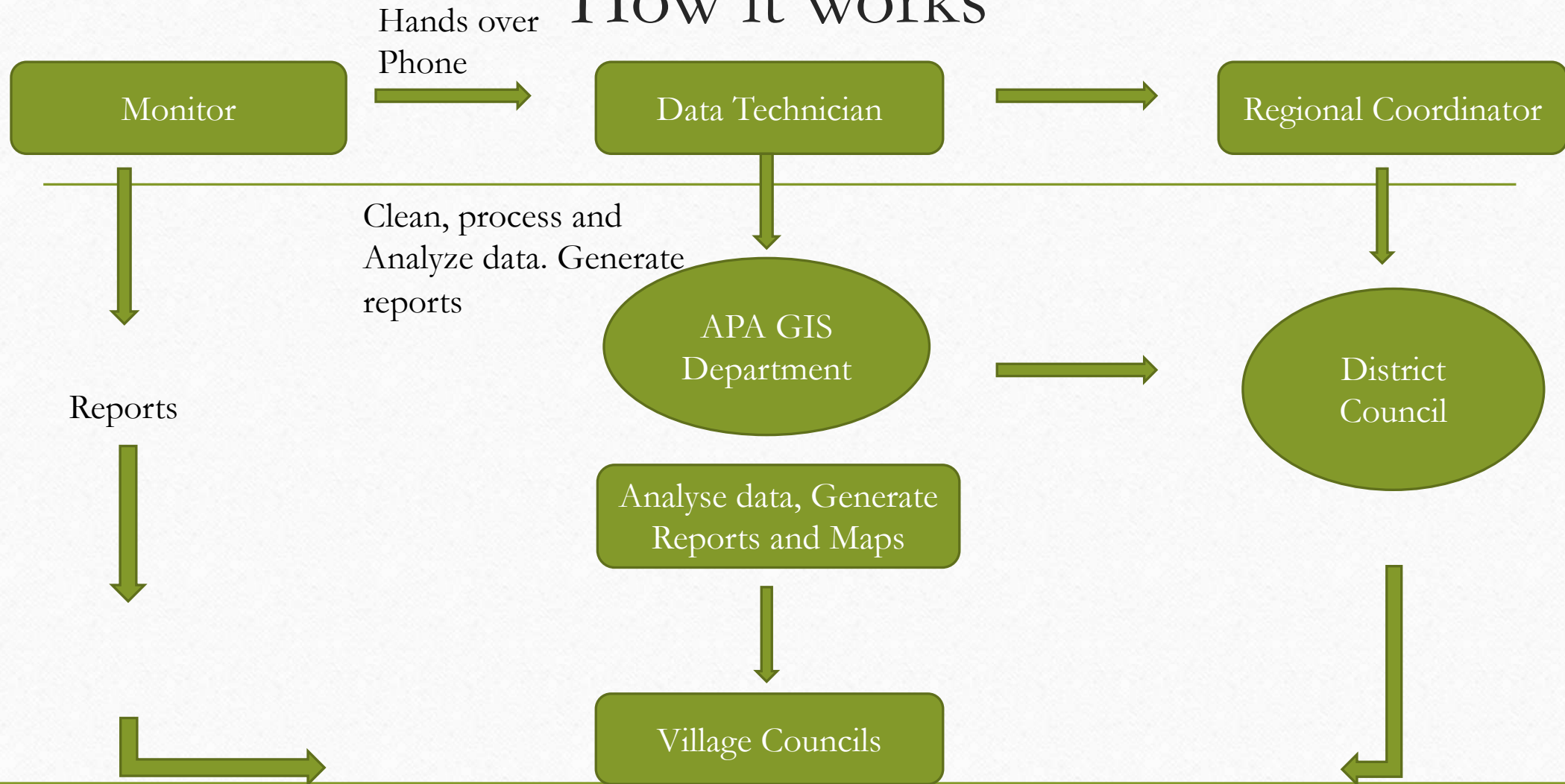
# Equipment

- Armor 2 smartphones with Locus Map (village monitor)
- Drone (unmanned aerial vehicles (UAVs) (village Monitor)
- Lenovo Laptop with QGIS and Microsoft Office (Data Manager)



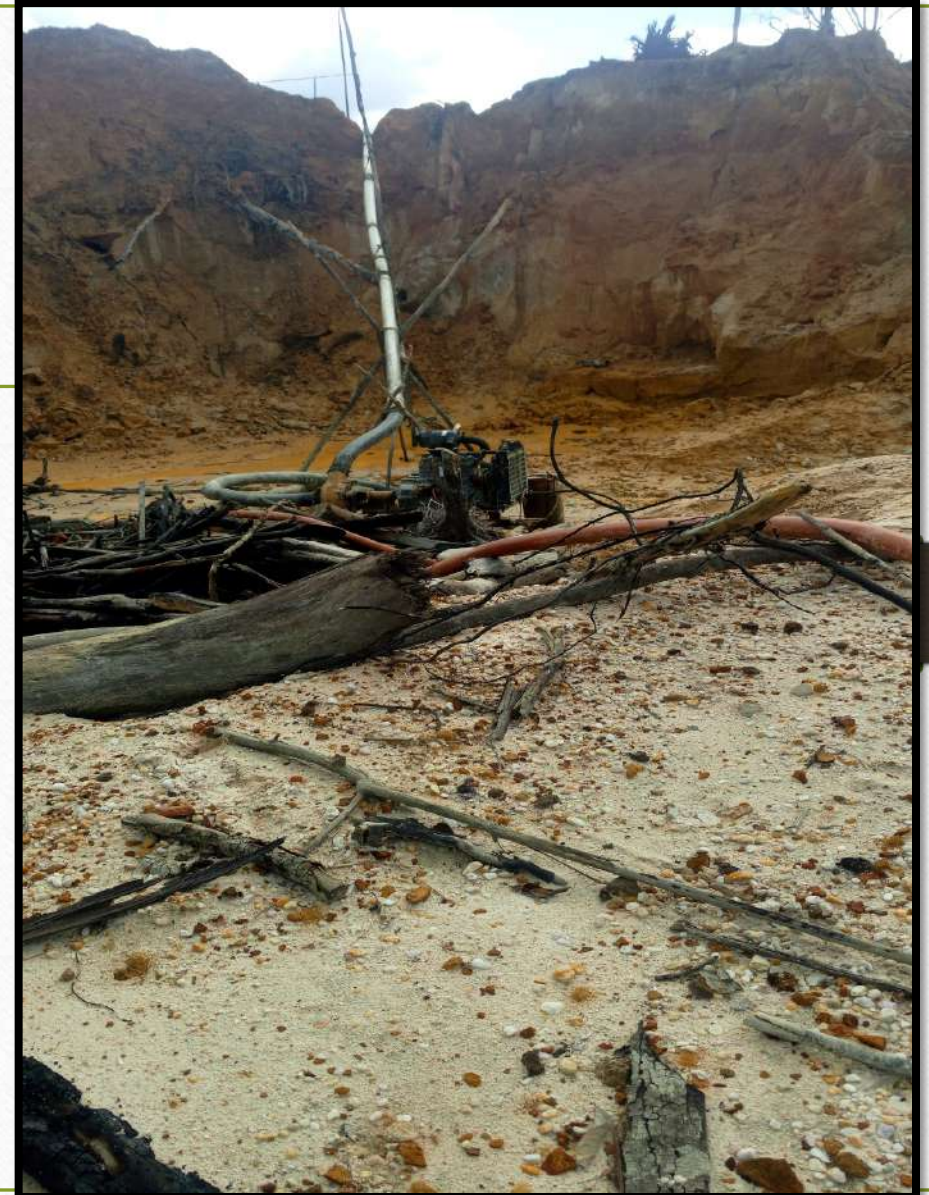


# How it works





## OPEN PIT MINES





# Multiple Land dredges in open pits





# Drone Shot of an open pit





# Drone Shot of a Dragga on a river





An aerial photograph of a river with greenish water, surrounded by dense green forest and some dry vegetation. The image is used as a background for the slide.

# Monitor

---

- Take GPS points of every mining camp sites on the Locus Map app
- Take pictures of mining and camp which is geo-tagged for future reference
- Complete a survey form
- Questions are posed to the miners are observations are made.
- Videos, photos and voice recordings are made with necessary permissions.







# Monitoring our Territories





# Data Manager

---

- Collects smartphones from monitors and downloads data to the laptop and an external hard drive(for back-up)
- Enter answers from the survey form unto a Microsoft Excel spreadsheet (for analysis)
- Enters GPS data unto QGIS and cleans and organizes data (for spatial analysis and making maps)
- Organizes all raw data into folders according to villages to put on external hard drive to be send to the APA to be used for analysis and further analyses

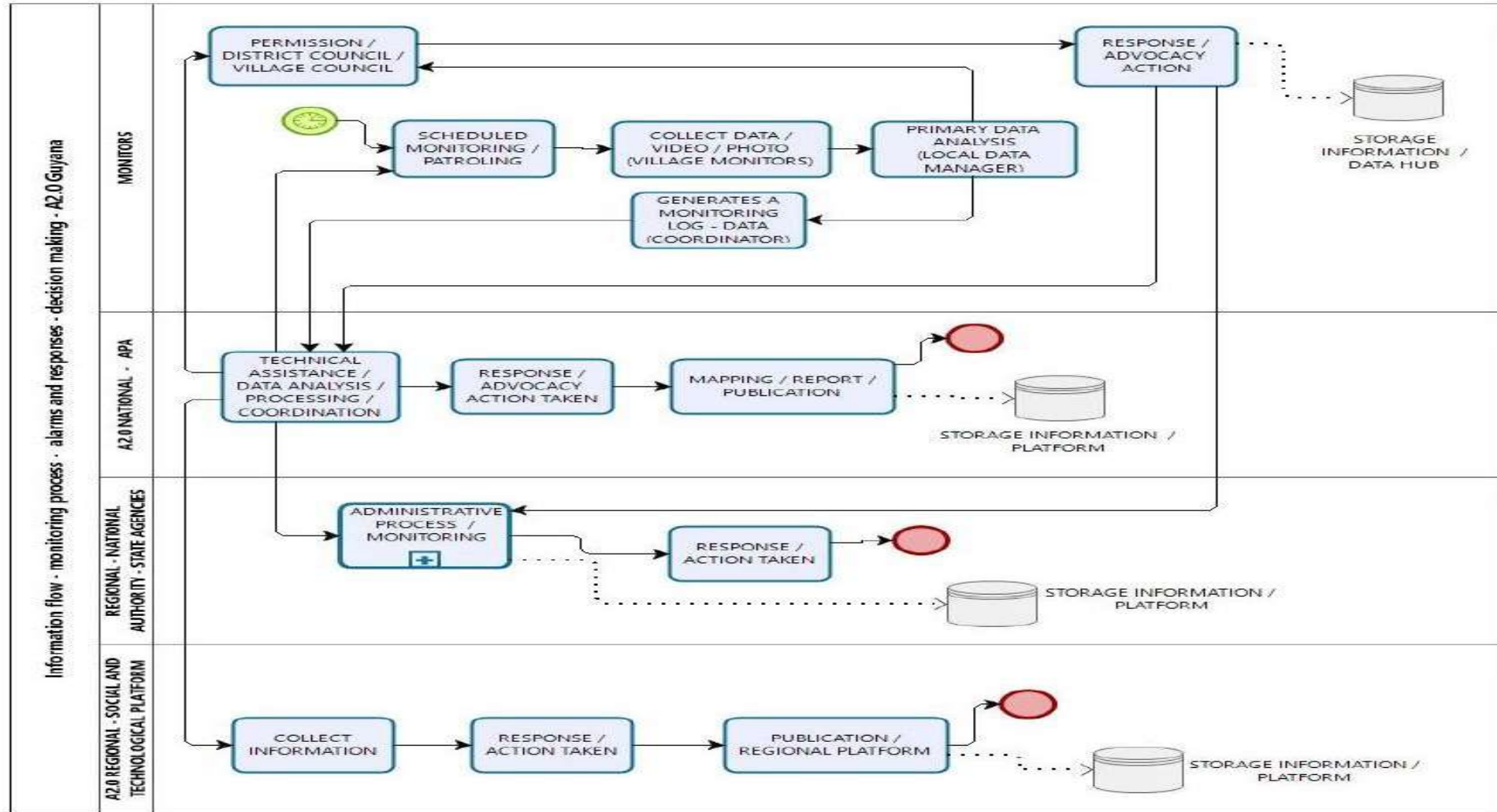


# Mining on Indigenous lands (Arau Village)





# Monitoring Diagram





# Looking forward/ Next steps

---





# Thanks

---

